

ASIA IMPAIRMENT SCALE

A = Complete

No motor or sensory function is preserved in the sacral segments S4-S5.

B = Incomplete

Sensory but not motor function is preserved below the neurological level and includes the sacral segments S4-S5.

C = Incomplete

Motor function is preserved below the neurological level, and more than half of key muscles below the neurological level have a muscle grade less than 3.

D = Incomplete

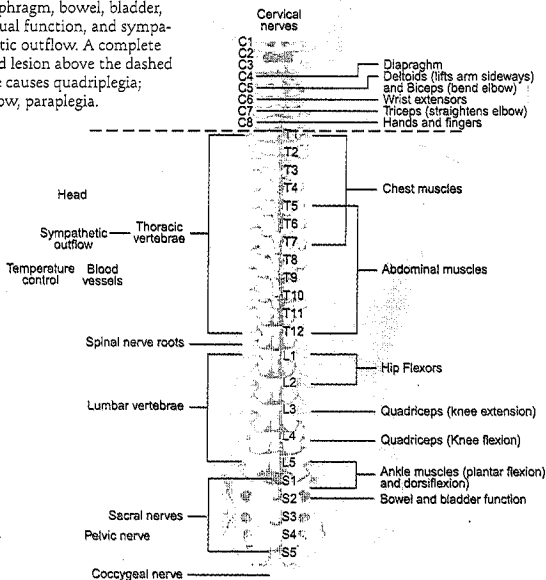
Motor function is preserved below the neurological level, and at least half of key muscles below the neurological level have a muscle grade of 3 or more.

E = Normal

Motor and sensory functions are normal.

The Spine, Spinal Cord and Spinal Nerves

Back view of points of origin of nerves supplying the lungs, diaphragm, bowel, bladder, sexual function, and sympathetic outflow. A complete cord lesion above the dashed line causes quadriplegia; below, paraplegia.



Canadian Spinal Research Organization (2004)